



## *The Microsoft Office Enterprise Project Management Solution*

---

**The Microsoft® Office Enterprise Project Management (EPM) Solution is based on Microsoft Office Project Portfolio Server 2007 and Microsoft Office Project Server 2007.**

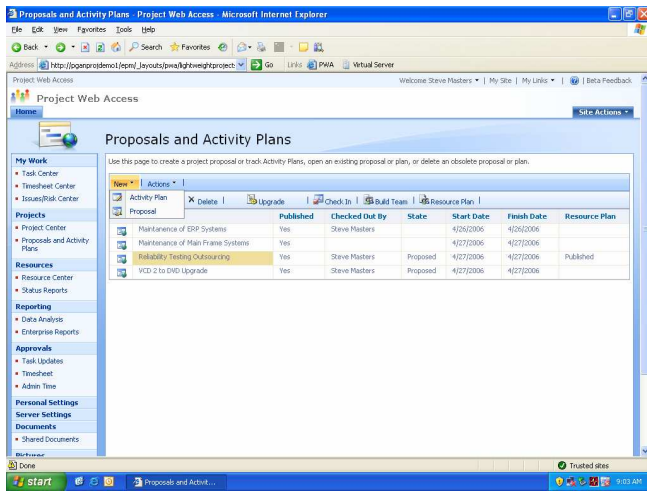
**This solution enables organizations to better manage projects and resources, collaborate across the entire enterprise, and effectively analyze and report on both projects and programs. Web-based portfolio management tools help executives align people and projects with business objectives, quickly identify problems, and take corrective actions. Team members easily update project information, collaborate, and stay informed through e-mail and Web-based tools. An extensible architecture enables organizations to integrate the Office EPM Solution with existing line-of-business systems.**

**The three-tiered architecture of Office EPM Solution consists of a front end (Microsoft Office Project Web Access and the thin Microsoft Internet Explorer® client, or Microsoft Office Project Professional 2007 and the Microsoft Win32® client), a middle tier (Office Project Server 2007), and a database (Microsoft SQL Server™ 2005). Optional components are Office Project Portfolio Server 2007 and Microsoft Office Project Portfolio Web Access 2007.**

### **Gain Visibility and Insights**

Align all work with your strategic objectives.

- **Track the entire project life cycle.** Project Web Access now includes Proposals that enable project initiation on the Web and use of the analytics in Office Project Server 2007 to track potential projects. Proposals help anticipate needs with Resource Plans. You can also track operations work that follows the completion of a project with Project Web Access Activity Plans.
- **Analyze and report.** In addition to predefined reports and filter views, users can access the Cube Building Service using a flexible user interface to build portfolio analyzer cubes with more data options and deeper insight. This uses the Reporting Data Service, which transforms Project data into a format suitable for end-user reporting and SQL Server Analysis Services cube building.
- **Test what-if scenarios.** See the impact of potential changes to your project schedule with Visual Change Highlights and Task Drivers. Test and reverse various scenarios in a security-enhanced environment with Multiple Level Undo.
- **Control project finances.** Assign a budget to projects and programs. You can define a budget at a high level to allocate funds and track costs against the budget.
- **Assign costs to tasks.** With the new Cost resource type, you can assign multiple arbitrary costs (that is, not based on work time) to a task. Also, new fields for cost information enable better project accounting.

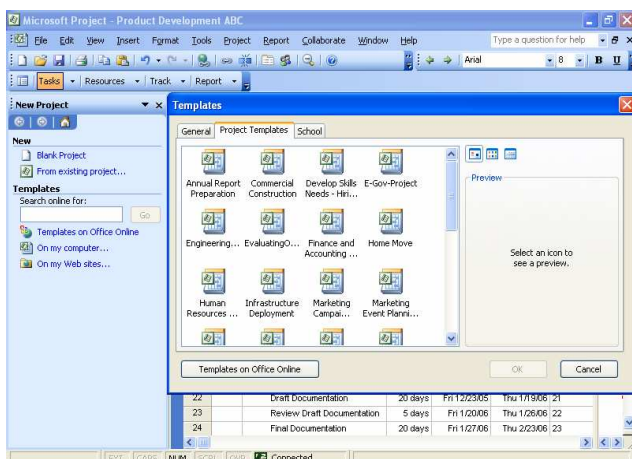


Initiate Proposals to track work prior to project approval.

## Easier to Get Started

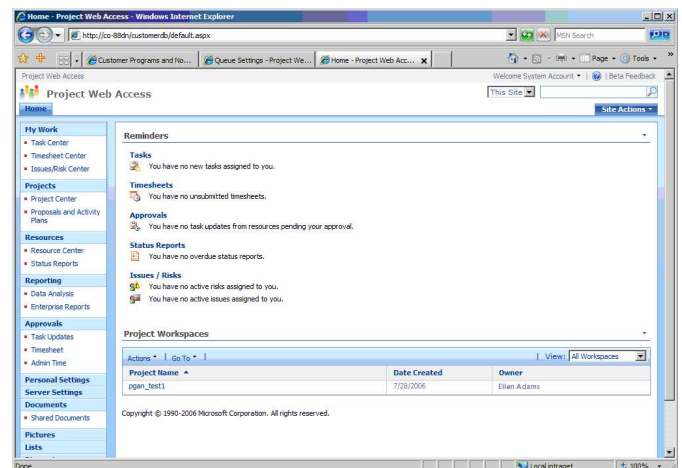
Enable faster and broader adoption with Office Project 2007.

- **Save time.** Office Project 2007 provides various templates to help speed the project management process. A project template can capture task and resource information, formatting, macros, and other project-specific settings. Get started quickly with the Project Guide Wizard, an interactive planning aid to help you master project management.



Project templates help you capture best practices and create consistency.

- **Use existing investments.** Access project data in familiar desktop applications. Integration with Microsoft Office Outlook® 2007 enables team members to view and report progress on tasks from their calendar. This helps users to provide project managers with timely updates for accurate reporting. Project also provides integration for reporting in other Microsoft Office system programs such as Microsoft Office Word, Microsoft Office Excel®, Microsoft Office Visio®, and Microsoft Office PowerPoint®.
- **Access project information using the Web.** Partners, executives, and team members can access functions and interact with role-specific project data by using their browser to open Project Web Access, which exposes shared project information.



Project Web Access enables partners, executives, and team members to view and interact with role-specific project data.

## Enterprise Ready

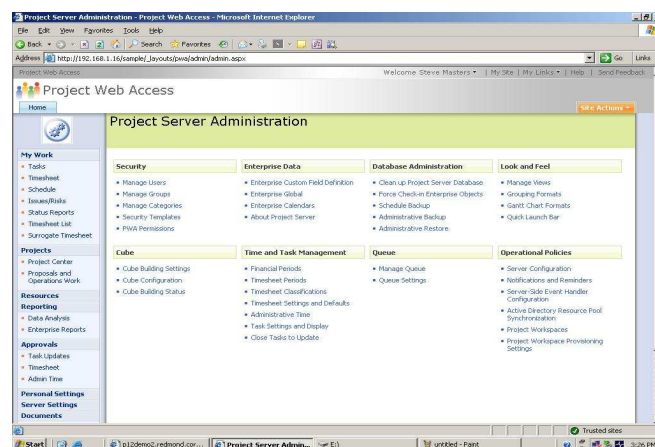
Office EPM Solution is scalable to support distributed organizations.

- **Improve performance.** The Active Cache provides more data on demand for fast open, save, publish, and other client/server communications for geographically distributed teams. This also enables offline use. Get great resiliency and use of server resources with the Queuing Service, which queues work requests pending server availability.

- **Manage the simple and complex.** For a simple project you can use Microsoft Windows® SharePoint® Services to create Project Task Lists that you can later import to Project Web Access. You can also now manage interrelated, large-scale projects as Programs. To better display cross-project dependencies within a Program, Deliverables enables you to create a SharePoint list of committed task dates to which other project managers can link their projects or tasks.
- **Manage resources.** Track resource use and skill levels. Assign work to an entire team rather than an individual resource with Team Resources. The Assignment Owner feature enables individuals other than the assigned resource to provide status updates on an assignment.
- **Use enhanced timesheet capabilities.** Timesheets extend well beyond the basics to serve as input for financial systems and analyzing progress. Easily know which resources are available and which ones are working, so you can schedule work effectively.
- **Enhance knowledge sharing.** Centrally manage and track project-related information through Office Project Server 2007 in combination with Windows SharePoint Services. Centralized document, risk, and issues management helps users collaborate to improve the quality of project deliverables.

Professional 2007. Additionally, you can flexibly format the interface of Project Web Access with all of the Windows SharePoint Services tools.

- **Extend functionality.** Incorporate business processes into projects with the Windows Workflow Foundation. Trigger the processes with events raised by Office Project Server 2007 with the Event Handler.
- **Manage the Office EPM Solution.** Security and other management functions are consolidated on a single, refactored interface in Project Web Access called Server Settings. This not only helps save time but helps reduce the learning curve for administrators.



*The improved administrator interface provides better control and more configuration options.*

## Extensible and Programmable

Easily integrate and automate your processes.

- **Customize and manage your solution.** The new API, Project Server Interface, enables you to access the functionality of Office Project Professional 2007. You can use the new Server-Side Scheduling feature to build a custom Web user interface without having to process schedule changes using Office Project

## For More Information

Learn more about the Office EPM Solution and the Microsoft Office system at [www.microsoft.com/office/epmsolution](http://www.microsoft.com/office/epmsolution).

For complete system requirements, visit [www.microsoft.com/office/epmsolution](http://www.microsoft.com/office/epmsolution).

This document is for informational purposes only. MICROSOFT MAKES NO WARRANTIES, EXPRESS OR IMPLIED, IN THIS SUMMARY.

The example companies, organizations, products, domain names, e-mail addresses, logos, people, places, and events depicted herein are fictitious. No association with any real company, organization, product, domain name, e-mail address, logo, person, place, or event is intended or should be inferred.

© 2006 Microsoft Corporation. All rights reserved. Microsoft, Excel, Internet Explorer, MSN, the Office logo, Outlook, PowerPoint, SharePoint, Visio, Win32, and Windows are either registered trademarks or trademarks of Microsoft Corporation in the United States and/or other countries. All other trademarks are property of their respective owners.

**Microsoft**